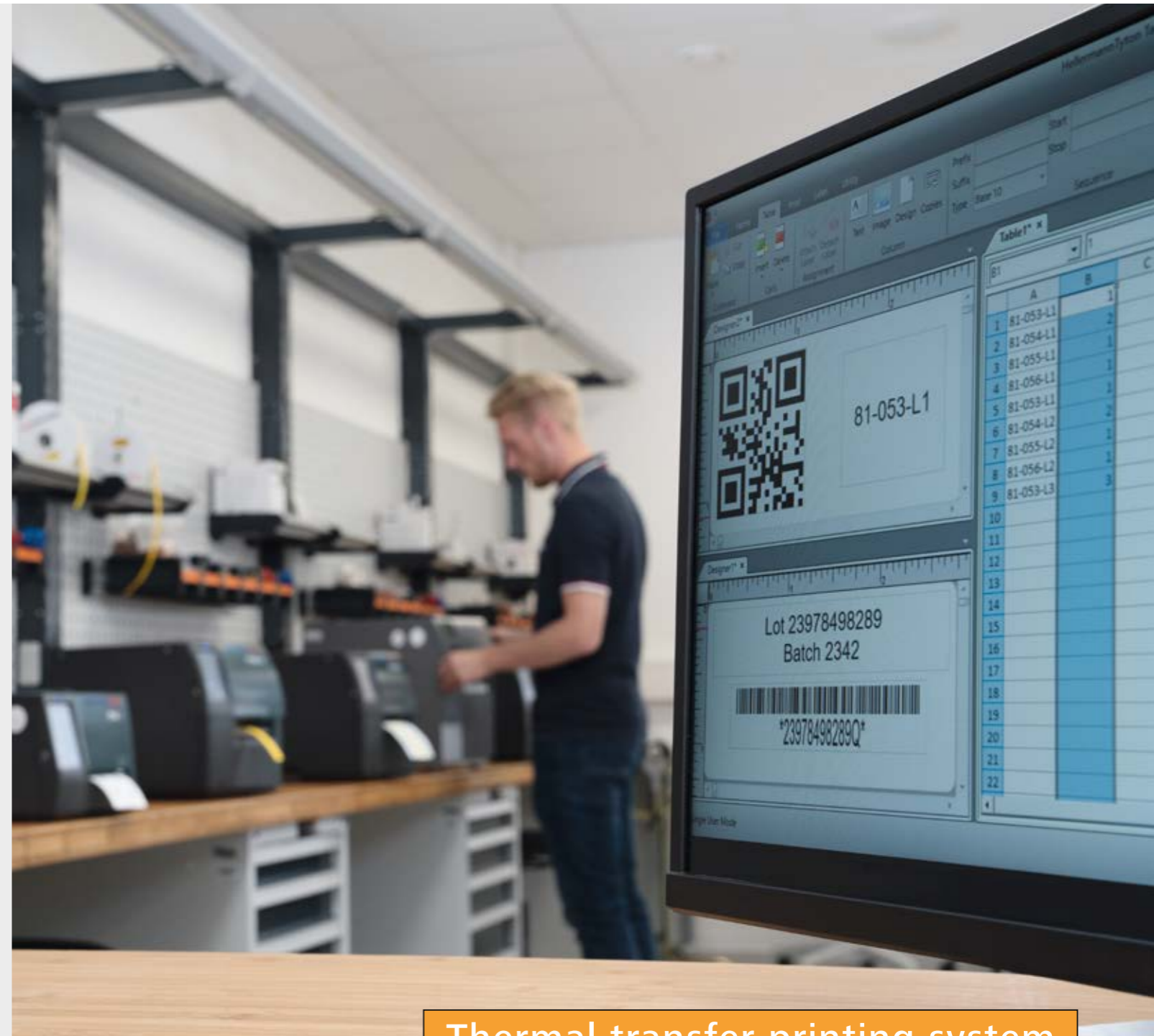


Our thermal transfer printer at a glance



TYPE	TT431	TT4030	TrakMark DS
Article-No.	556-00400	556-04037	556-05000
Print Method	Thermal transfer	Thermal transfer	Thermal transfer
Print Head Type	300 dpi, flat type	300 dpi, flat type	300 dpi, flat type
Print Speed	up to 150 mm/s	up to 300mm/s	30, 40, 50, 75, 100, 125 mm/s
Max. Print Width	105.70 mm	105.70 mm	105.6 mm
Label Height Max (metric)	4,000 mm	2,000 mm	2,000 mm
Interfaces	USB 2.0, Ethernet 10/100 Base T, RS232	RS232 C, USB 2.0, Ethernet 10/100 Base T	RS232 C, USB 2.0, Ethernet 10/100 Base T
Supported Barcodes, Printer	Standard and 2D	Standard, 2D	Standard, 2D
Printer Memory	256 MB RAM	256 MB RAM	64 MB RAM
Dimensions W x H x D	253 mm x 189 mm x 322 mm	252 mm x 288 mm x 460 mm	248 mm x 395 mm x 554 mm
Weight	4 kg	10 kg	21 kg
Cutter	556-00452	556-04050	556-04025
Perforator	556-00456	556-04051	556-04024
TagPrintPro4.0-EMEA	556-00059		



Thermal transfer printing system

Simplifying the industrial printing process

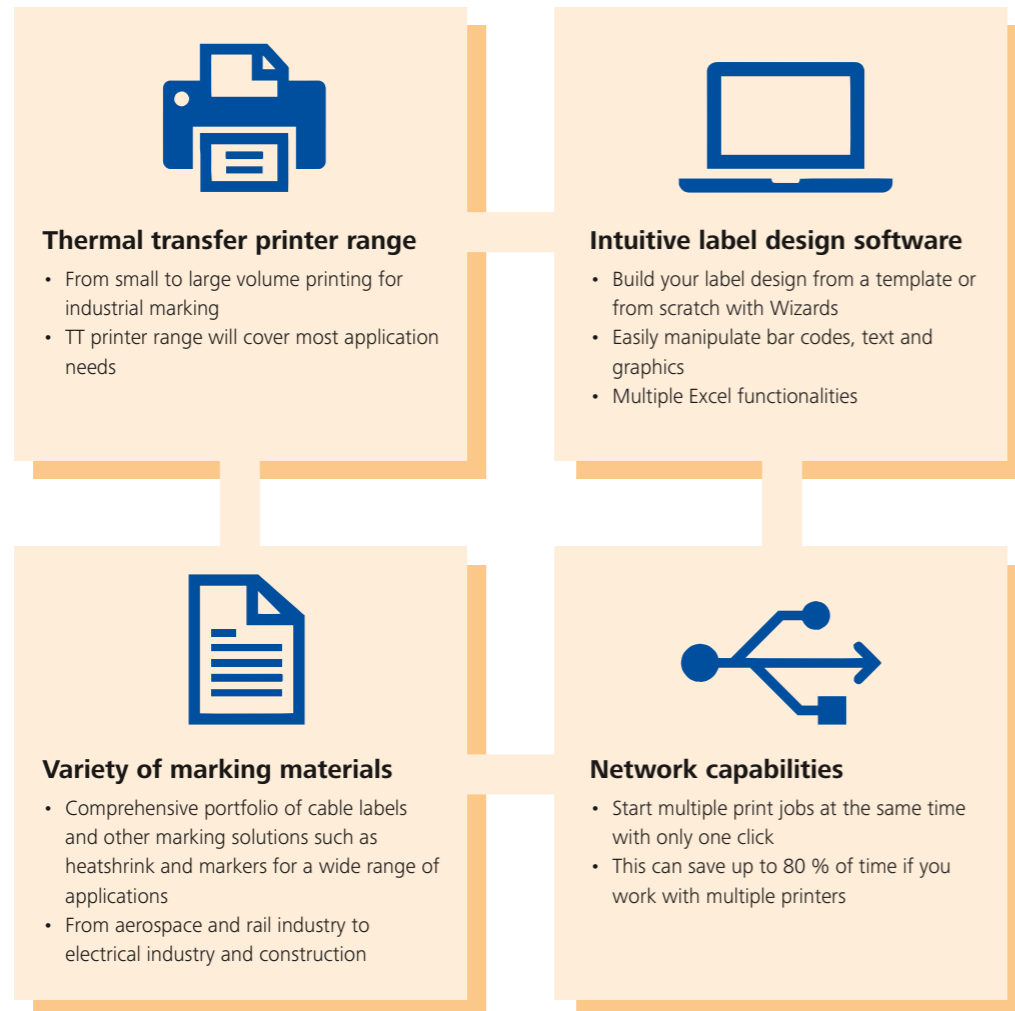




## SIMPLIFY YOUR LIFE

### HellermannTyton labelling system

The system comprises of the feature-rich labelling design software TagPrint Pro and the highest quality thermal transfer printers PLUS a large variety of marking material from heatshrink tubing, plastic markers to industrial labels.



## MADE TO PRINT

### Our thermal transfer printers

- Versatile:** Texts and barcodes can be printed reliably as well as logos and information contained in excel data bases – Windows compatible
- Network capability:** Control multiple printer from one source with built-in network driver and automation capabilities
- Strong contrast:** Long-lasting printing results with high resolution of up to 300 dpi
- Robust:** The printers have been optimised for use in industrial environments
- User-friendly:** Powerful yet easy-to use interface for easy print designs from stored templates or from scratch
- Flexible:** Multiple materials can be printed at high quality – from heatshrink tubing, cable markers to industrial labels
- Efficient:** Thanks to up to 300 meters of ribbon length less standstill is created by ribbon changes

For small to medium volume printing - **TT431**



For medium to high volume printing - **TT4030**



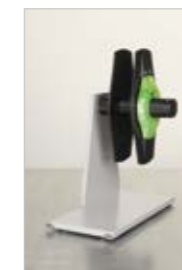
For double-side printing - **TrakMark DS**



Cutter for TT4030 and TrakMark DS



Perforator for the TT430 printer



External reel holder for TT430 printer



## MADE TO DESIGN

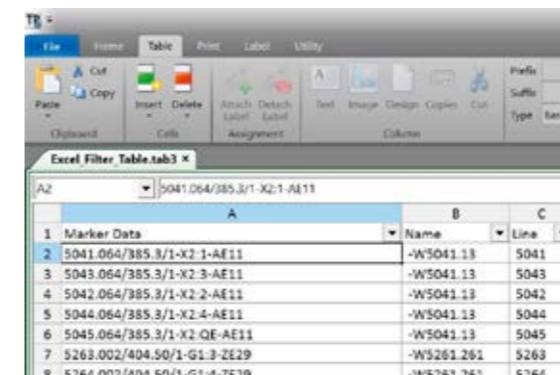
### TagPrint Pro 4.0 Intuitive label design software for thermal transfer printing



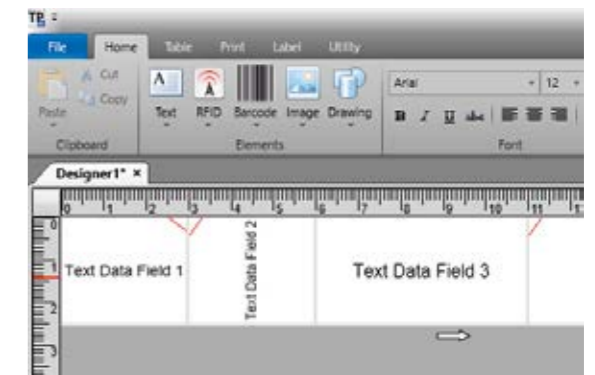
The new **TagPrintPro version 4.0** is the next level of the easy-to-use label design and printing software in the HellermannTyton printing system for achieving improved efficiency in wire and component marking, asset tagging, and structured cabling identification.

With TagPrintPro you can print single jobs but also batch print to either one or more printers at the same time. Users can view object properties, data and actual label layout at the same time.

### Multiple help functions ensure effortless label design



**Excel functions** within TagPrint Pro such as filter functions make printing from tables easy and ensure quick setups.



**Optional wizards** easily guide you through label setups; Featured: Panel Label Wizard - Create dynamic endless strips with several text elements.

#### Simplify your label design

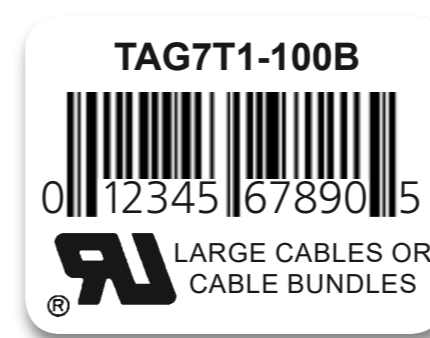
- Intuitive design tools that manipulate bar codes, text and graphics with ease
- Design Wizards easily guide a user through the addition of text, images, and barcodes to create a label
- All HellermannTyton labels and markers are already preconfigured in database

#### Expanded Import Capabilities

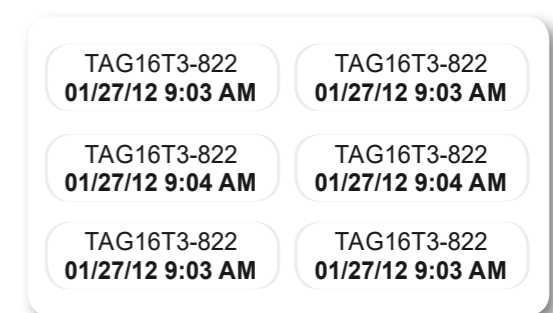
TagPrintPro has a wide range of data import capabilities, including XMT, CSV and ODBC, which will refresh automatically, or in the case of Excel, just open directly in the program.

#### Design features

- What You See Is What You Get (WYSIWYG) label creation software with practical pull-down menus and a wide array of design options
- Software includes hundreds of clip art images (or import your own)
- Flip, rotate, inverse or mirror image graphics and text
- Print the most popular bar code types such as; Code 39, Code 128, QR Code, EAN 13, Datamatrix etc.
- Multiple methods of scaling text in horizontal and vertical planes



**Barcodes automatically scale** and fit within the label.



**Includes time stamp** customisation for easy insertion of date and/or time fields into the labels.



## SCAN – PRINT – DONE

### Eliminate errors and work more efficiently with Print Automation

HellermannTyton Print Automation is the powerful workflow assistant built into TagPrint Pro label design software. Missed details and the potential for human error can slice into profitability and productivity. Print automation delivers a simple yet powerful solution to create labels in a fraction of the time.

#### Print entire batches of labels with a simple scan of a bar code.

Searching for, opening and printing label files individually is not only tedious, it is one more area where mistakes are made. That doesn't include the mistakes that can occur when an operator must select the printer, enter a quantity and add variable data. With HellermannTytonprint automation, the operator simply scans a bar code on the work order for instant printing. No bar code reader? The operator can enter the job number instead.

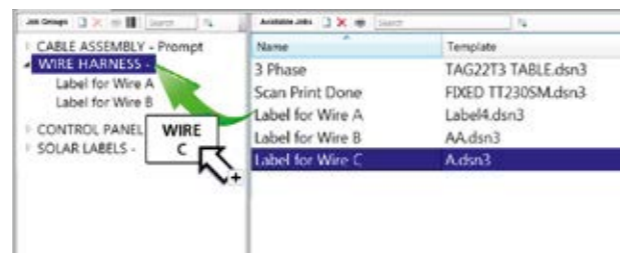


#### At a glance – why Print Automation?

1. Can increase label production speeds by as much as 23 times.
2. For high mix/low volume label jobs, reduce labour by 20 % or more – particularly in full automation mode.
3. Reduced errors combined with time and material savings can quickly pay for additional printers to enable full automation
4. Grouping labels under one file name and printing to multiple printers – capability built into TagPrint Pro.
5. Custom user prompts prevent unwanted operator changes, allowing access only to preauthorized variables.

#### Create print job groups with drag-n-drop simplicity.

You probably print different types of labels or marker for a single job. Instead of opening each label individually, create a job folder and give it an easy-to-identify group name. Then, just drag and drop all the applicable files into the folder. No more individual file openings needed. This not only saves time, it ensures the operator won't select an incorrect label. For frequently used label groups, "pin" the batch name right to your file menu and access the labels in an instant.



### Reduce your workflow complexity and save time

With the help of the HellermannTytonPrint Automation you can reduce your workflow of simultaneously printing multiple designs and projects just by scanning a bar code or entering a designated project number.

